

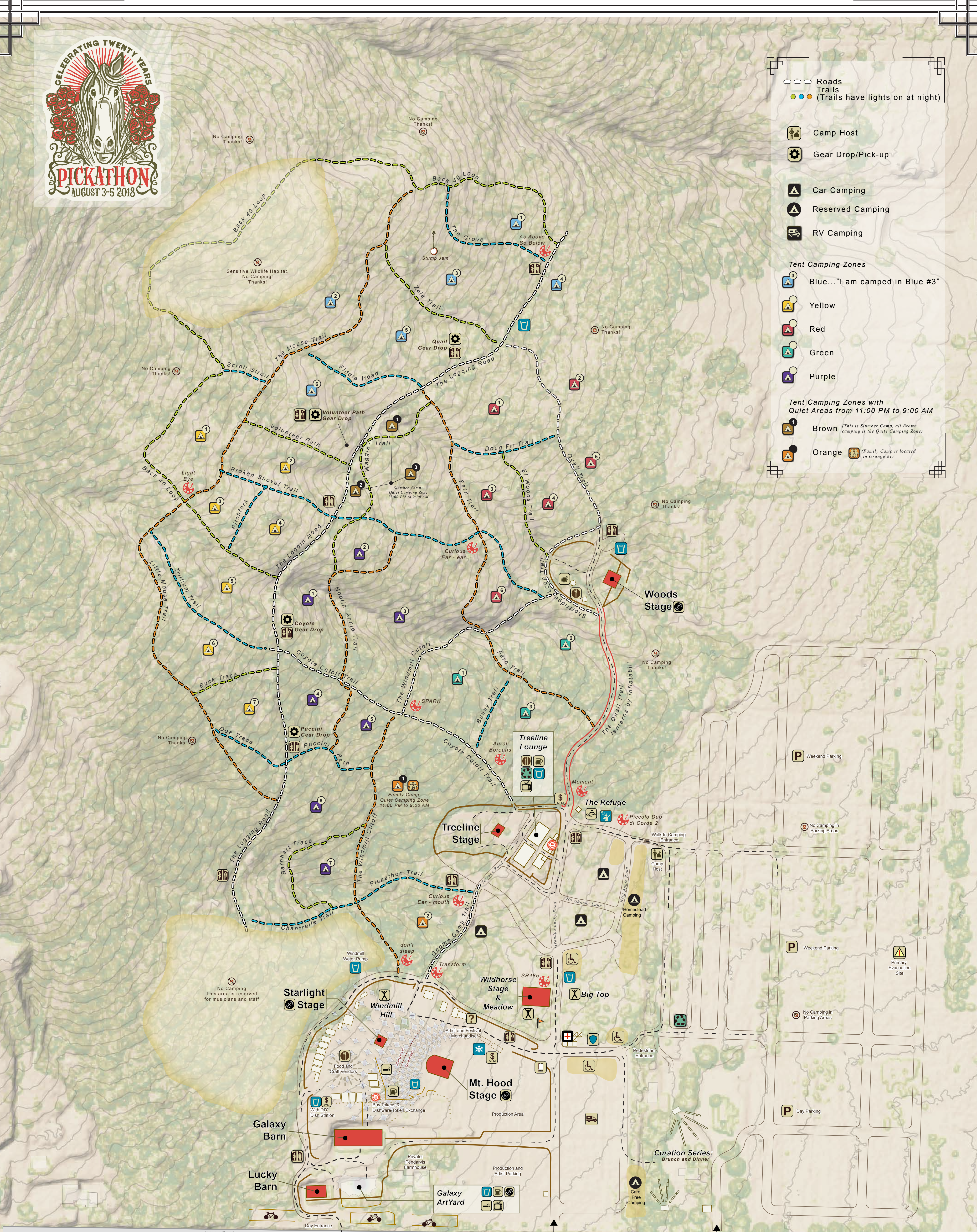


○○ Roads
 — Trails
 ●●● (Trails have lights on at night)

🏠 Camp Host
 ⚙️ Gear Drop/Pick-up
 🚗 Car Camping
 🏠 Reserved Camping
 🚐 RV Camping

Tent Camping Zones
 🟦 Blue... "I am camped in Blue #3"
 🟡 Yellow
 🔴 Red
 🟢 Green
 🟠 Purple

Tent Camping Zones with Quiet Areas from 11:00 PM to 9:00 AM
 🟤 Brown (This is Slumber Camp, all Brown camping is located in Orange #1)
 🟠 Orange (Family Camp is located in Orange #1)



Come Here First
 Check-in
 30 Minute Parking Time Limit

Piccola Duo di Corde 1
 Secondary Evacuation Site

Once you have:
 • Car Camping parking
 • RV parking
 • Artist/Production parking
 • Or you require ADA parking
 and everyone in the car has a wristband...
PARK HERE.

Once you have:
 • Weekend Parking
 • Day Parking
 and everyone in the car has a wristband...
PARK HERE.

🍺 Beer Garden	🍽️ Buy dish and token	👶 Kids Area	🚗 Car Services	🚭 All venues are non-smoking except in the 2 designated smoking areas.	❓ Questions, Information, Lost and Found
🎧 DJ	💧 Water	🧘 Massage	🚗 EcoShuttle & Hotel Shuttle	♿ Disabled facility We have provided reserved parking, camping and restroom facilities for the disabled. The rough ground of the site is a pasture most of the year and cannot be represented as accessible, as defined by the ADA.	🏠 Medical
📺 Simulcast	❄️ Ice	🏁 Fun Run Start/Finish	🚲 Bicycle parking		🛡️ Security and Safety
🍳 Food Vendors	🚿 Showers	📍 Designated Jamming Areas	🅅 Parking		🚧 Evacuation Site (Primary and Secondary)
🚻 Restrooms	🎨 Artist Installation "Title"				♻️ Recycling and compost
					📶 Cell phone charging station

